

Little Boy Blue

by Robbyn Kenyon



Materials:

4 skeins Caron Simply Soft, worsted weight yarn - about 1320 yards
Size 8 US (5.00 mm) circular needle - 40" is probably the most convenient length
Size 8/H (5.00 mm) crochet hook
Stitch markers if desired.

Terms:

K - knit

P - purl

K2togB - Knit two together through the back loops

P2tog - Purl two together

KFB - Knit in the front of the stitch and, without removing stitch from left needle, knit again into the back of the stitch (creates a second stitch) and then let the stitch drop from the left needle.

Sl - Without working, slip purlwise the number of stitches indicated

Note: The K2togB and the SSK are interchangeable in this pattern. I usually use the SSK (which is why I wrote the pattern that way) but the K2togB is sometimes faster and easier. To my eye there isn't much difference in the result so use whichever pleases you :)

Instructions:

Cast on 99 stitches.

Starting triangles:

P2, turn
K2, turn
P3, turn
K3, turn
P4, turn
K4, turn
P5, turn
K5, turn
P6, turn
K6, turn
P7, turn
K7, turn
P8, turn
K8, turn
P9, turn
K9, turn
P10, turn
K10, turn
P11 - do not turn.

The first triangle is complete. Create another triangle exactly the same way and continue to create triangles until you have used up all of your cast on stitches and have nine triangles.

First tier blocks:

Starting side triangle:

P2, turn
K2, turn
KFB, SSK, turn
P3, turn
KFB, K1, SSK, turn
P4, turn
KFB, K2, SSK, turn
P5, turn
KFB, K3, SSK
P6, turn
KFB, K4, SSK, turn

P7, turn
KFB, K5, SSK, turn
P8, turn
KFB, K6, SSK, turn
P9, turn
KFB, K7, SSK, turn
P10, turn
KFB, K8, SSK - do not turn.

Tier One Broken Rib Blocks:

Pick up 11 stitches down the side of the first triangle, turn

1. Purl 11
 2. K1, *P1, K1* 5 times, K2togB. The K2togB consists of the last stitch of your block and the first available stitch on the left-hand needle.
 3. S11, Purl 10, turn
- Repeat rows 2 and 3 until you have acquired the last stitch of the first group on the left-hand needle. Do not purl back.
Continue making blocks this way in the broken rib pattern until you have ten of them.

Ending Side Triangle:

Pick up 11 stitches.

Purl 11, turn
K9, K2togB, turn
P10, turn
K8, K2togB, turn
P9, turn
K7, K2togB
P8, turn
K6, K2togB, turn
P7, turn
K5, K2tog, turn
P6, turn
K4, K2togB, turn
P5, turn
K3, K2togB, turn
P4, turn
K2, K2togB, turn
P3, turn
K1, K2togB, turn
P2, turn
K2togB - don't turn

Tier 2 Stockinette Blocks (there are no starting triangles on this tier)

First Block:

Pick up 10 stitches, purlwise (plus one stitch left over from previous row = 11 stitches)

1. K 11

2. P 10, P2tog, turn (P2tog consists of the last stitch of the block and the first available stitch of the next block).

Repeat rows one and two until last stitch of available group has been acquired (final P2tog) - do not turn.

Second (and each remaining) Block:

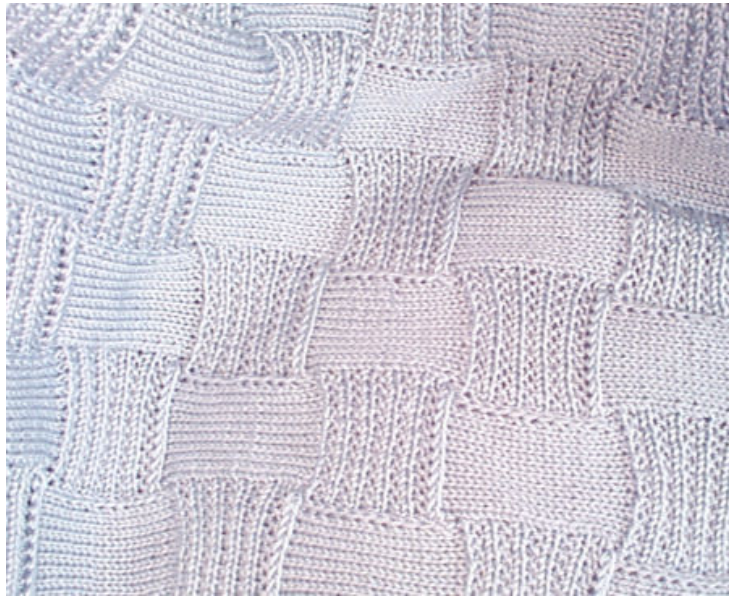
Pick up 11 stitches, purlwise (plus one stitch left over from previous row = 11 stitches)

1. K 11

2. P 10, P2tog, turn (P2tog consists of the last stitch of the block and the first available stitch of the next block).

Repeat rows one and two until last stitch of available group has been acquired (final P2tog) - do not turn.

Repeat the procedure for Second Block for the remaining eight blocks of this tier.



Repeat Tier 1 and Tier 2 blocks, alternating until you have the length you want - about 45" - ending with a first tier row. The blanket measurements, of course, aren't hard and fast - you can work any length and width you like. Something smaller than this will require less yarn and something larger will need more.

Ending triangles and bind-off

With 1 stitch on left needle, pick up and purl 10 stitches along the side of the next block, turn.

Knit 11, turn.

P2tog, P8, P2tog, turn.

K10, turn.

P2tog, P7, P2tog, turn.

K9, turn.

P2tog, P6, P2tog, turn.

K8, turn.

P2tog, P5, P2tog, turn.

K7, turn.

P2tog, P4, P2tog, turn.

K6, turn.

P2tog, P3, P2tog, turn.

K5, turn.

P2tog, P2, P2tog, turn.

K4, turn.

P2tog, P1, P2tog, turn.

K3, turn.

P2tog, P2tog, turn.

K2, turn.

P1, P2tog, turn.

K2, turn

P3tog.

Repeat this procedure for each required ending triangle. One stitch remains.

Insert crochet hook into the remaining stitch and ch2. Work a round of hdc (half double crochet) evenly around the blanket edge, working three hdc into each corner. Bind off.

If desired, more than one round of edging may be worked; more yarn will be needed, in that case.

