

# Open Cable Scarf

Here's a scarf pattern along with both cable chart and "pithy" instructions. A minor warning - this is cable intensive and there are cable-crossing on *every* right side row. Being able to cable without a needle is very useful and saves a lot of time.



## Open Cable Scarf

### Materials:

Classic Elite Waterspun, 4 hanks (yarn has been discontinued; any light worsted will do the trick).

One pair US size 7 needles

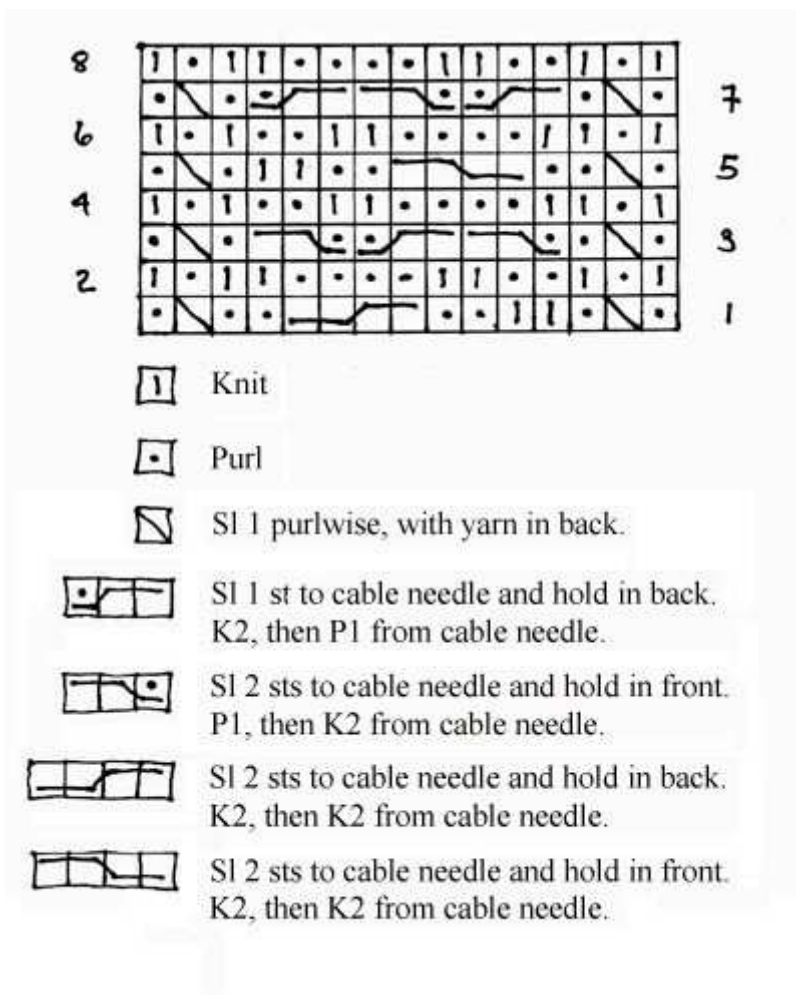
### Terms:

C4B Slip next 2 sts to cable needle and hold in back, k2, then k2 from the cable needle.

C4F Slip next 2 sts to cable needle and hold in front, k2, then K2 from cable needle.

FC Slip next 2 sts to cable needle and hold in front, P1, then k2 from cable needle.

BC Slip next st to cable needle and hold in back, k2, then P1 from cable needle.



### Chart for cable panel

For chart readers, simply work three garter stitches at each edge of the scarf and between the cable panels.

Cast on 39 sts

Row 1: \*K3, P1, Sl1 wyib, P1, K2, P2, C4B, P2, Sl1 wyib, P1\*; repeat from \* to \*; end K3.

Row 2: \*K4, P1, K2, P4, K2, P2, K1, P1, K1\*; repeat from \* to \*; end K3.

Row 3: \*K3, P1, Sl1 wyib, P1, FC, BC, FC, P1, Sl1 wyib, P1\*; repeat from \* to \*; end K3.

Row 4: \*K4, P1, K1, P2, K2, P4, K2, P1, K1\*; repeat from \* to \*; end K3.

Row 5: \*K3, P1, S11 wyib, P2, C4F, P2, K2, P1, S11 wyib, P1\*; repeat from \* to \*; end K3.

Row 6: \*K4, P1, K1, P2, K2, P4, K2, P1, K1\*; repeat from \* to \*; end K3.

Row 7: \*K3, P1, S11 wyib, P1, BC, FC, BC, P1, S11 wyib, P1\*; repeat from \* to \*, ens K3.

Row 8: \*K4, P1, K2, P4, K2, P2, K1, P1, K1\*; repeat from \* to \*; end K3.

Repeat rows 1-8 for desired length. Fringe or trim as desired.

The width of the scarf can be easily adapted by adding or subtracting garter stitches or, if much greater width is desired, another cable panel + 3 garter stitches could be added.



This work is licensed under a [Creative Commons Attribution-NonCommercial-ShareAlike 2.5 License](https://creativecommons.org/licenses/by-nc-sa/2.5/).